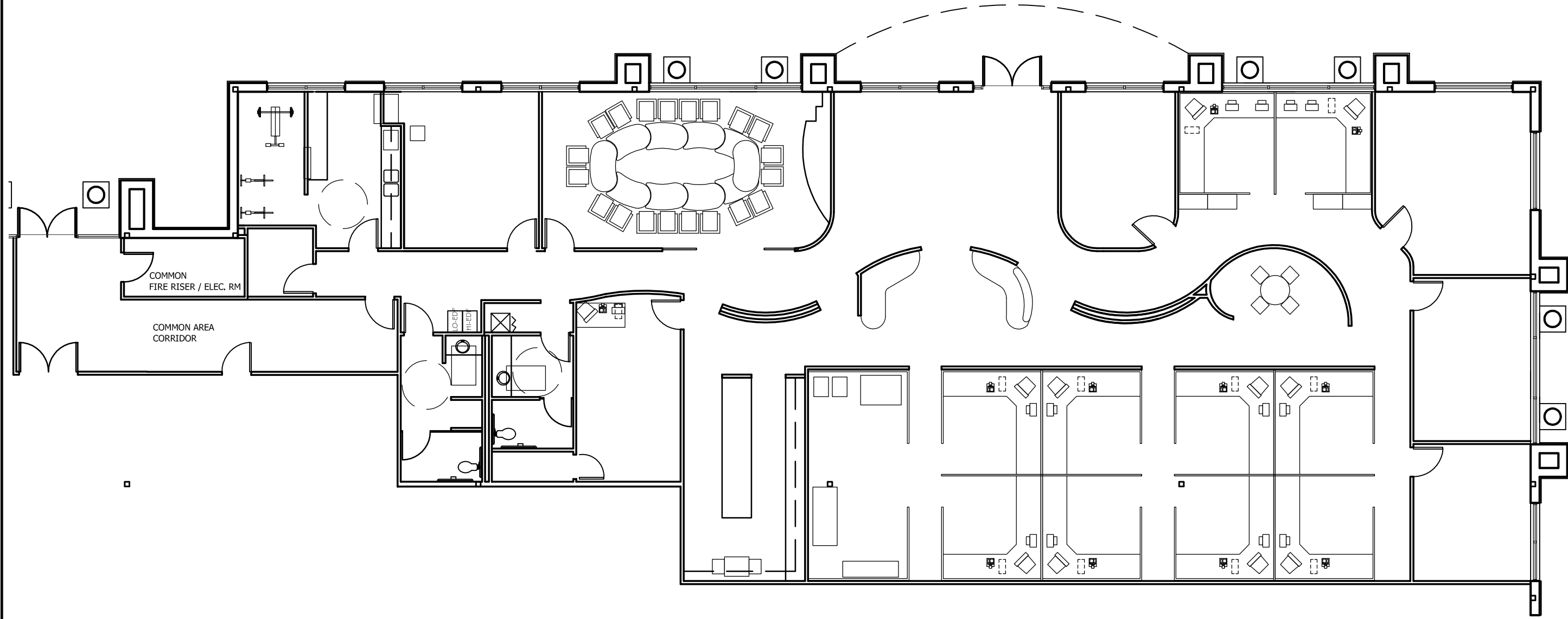


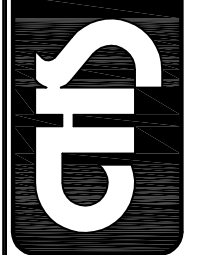
C:\chis-jobs\BALLPARK PLAZA\LEASES\Con-real\Floor Plan.dwg, 7/15/2022 12:03:32 PM



CONTACT:
OAKHOLLOW GROUP
MOJY HADDAD
817-395-0111
mojy@oakhollowgroup.com

1 EXISTING FLOOR PLAN - SUITE 110
3/32" = 1'-0"

COPYRIGHT © CHS ARCHITECTS



CHS ARCHITECTS, INC.
2500 NE GREEN OAKS BLVD., SUITE 200
ARLINGTON, TEXAS 76006
(817) 640-3199

PROJECT NUMBER:
DATE:
7-15-2022

SUITE 110 AT BALLPARK PLAZA

1900 BALLPARK WAY
ARLINGTON, TX 76006